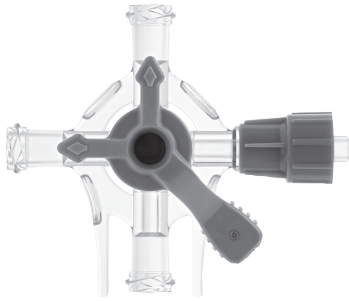


QITEXIO®

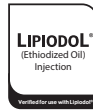
4-way Stopcock

Pmax = 550 PSI/ 38 bar

REF QIT014



Non-Toxic



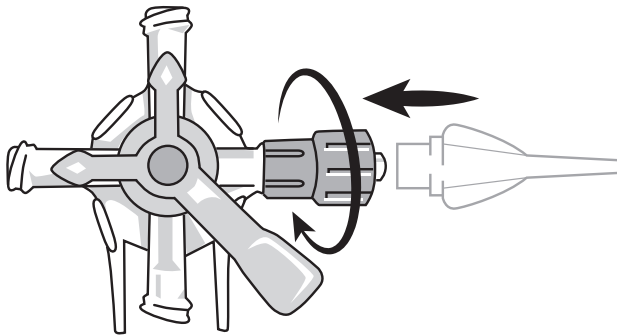
Indications for use: Qitexio Stopcock is intended to serve as a flow control and delivery device for I.V. fluids injection to the patient's vascular system. The device is indicated for medium pressure injection of fluids. It is also used for delivery of Lipiodol (Ethiodized Oil) Injection. It is intended for single use only. The device is not indicated for use in infusion.

PRECAUTIONS FOR USE

- This device must be used by qualified healthcare professionals only.
- This device is not made with natural rubber latex
- Do not resterilize. This product cannot be adequately cleaned and/or sterilized by the user in order to facilitate safe reuse, and is therefore intended for single use. Attempts to clean or sterilize these devices may result in bioincompatibility, infection or product failure risks to the patient.
- Before use, always check that the medical device and its packaging are undamaged.
- Before and during use, ensure all facility safety, hygiene, and asepsis protocol(s) are followed.
- For safe & proper use of the product, please carefully read & follow the instruction(s) for use of the drugs used with the device. Ensure that the use of this device respects the valid rules of good practice & the marketing authorization (MA) of the used products.
- This device is for manual, hand-held use only.

- Connections are compatible with 6% (Luer) taper.
- All Luer connections should be gently hand tightened without over tightening to ensure their security and to prevent damage to the device.
- Using the stopcock beyond its intended maximal pressure (Pmax) could cause leaks.
- To disconnect the stopcock, hold the downstream device then unscrew the mobile ring without turning the stopcock.
- After use, the devices must be treated as hazardous health care waste, according to the regulations in force for the device and the administered fluids.
- If the used medical device is to be returned to the manufacturer, ensure it is decontaminated first, according to the regulations in force for the device and the administered fluids.

!/\ To disconnect the stopcock, hold the downstream device then unscrew the mobile ring without turning the stopcock.



To connect the stopcock to another compatible device, insert the other device's connector into the Stopcock's Luer taper and then screw the mobile ring.

DESCRIPTION OF SYMBOLS

Consult instructions for use	Do not reuse	Do not re-sterilise
Batch number	Sterilized using irradiation	Do not use if package open or damaged
Manufacturer's product reference	Single sterile barrier system. Sterilized using irradiation	Keep dry
Use-by date	Manufacturer	Fragile: handle with care
Date of manufacture	Temperature limitation	Poses no known hazards in MR environments
Verified for use with lipiodol® (Ethiodized Oil) Injection	Non-pyrogenic	Quantity (X) per package
Prescription only	This way up	